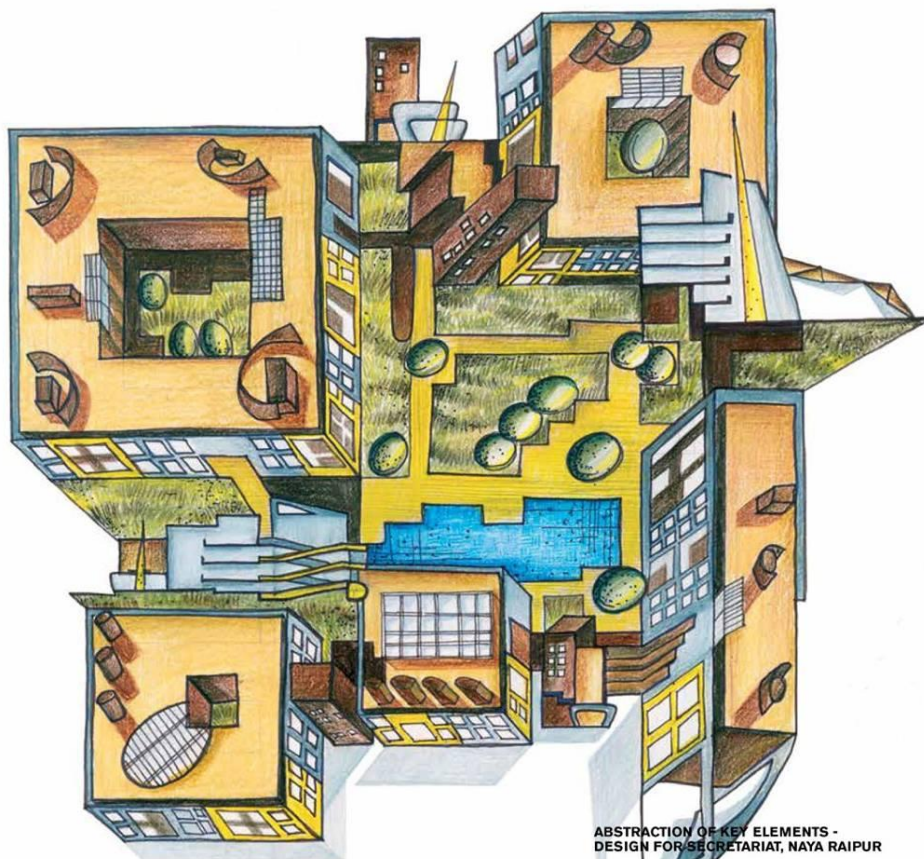


## INDIA

045

## LA CITTÀ DELL' UOMO



### ABSTRACTION OF KEY ELEMENTS - DESIGN FOR SECRETARIAT, NAYA RAIPUR

Hena Kapadia  
Art Historian

Ranjit Hoskote  
Curator and Cultural Theorist

Rutanaj Parikh  
Architect and Director, CCF

Mustansir Dahi  
Architect and Historian

Pankaj Vir Gupta  
Architect

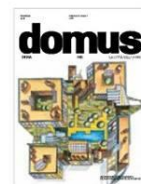
Christine Muelle  
Architect

## Andee J. Farthorne

Andrea Basile  
Andrea Marladonna  
Chirag Jain

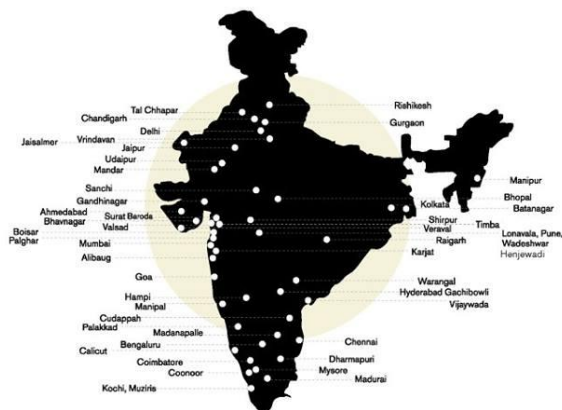
David Židlický  
Geoffrey Cottle  
NRDA

Timm Rautert  
Charles Correa Foundation (C



**Cover:** An abstraction of the key design elements for the secretariat blocks in the Capitol Complex for Naya Raipur, Chhattisgarh designed by UCI Architecture & Environment. Various functions are housed in a series of built volumes interconnected by courtyards and terraces, marked by landscaped elements, ramp-stacks, and pergolas, making the complex appear like a campus of interactive zones and sculpted volumes rather than an over-dominated state building.

Author		Design	Title
Kaiwan Mehta	26		<b>Editorial</b> What does architecture do? What does architecture want?
Hena Kapadia	28	Kochi-Muziris Biennale 2015	<b>Confetti</b> Cartographical chaos
Ranjit Hoskote	32	Jehangir Sabavala	<b>Contemporary museum for architecture in India</b> Unpacking the Studio
Ruturaj Pankh Ranjit Hoskote Mustansir Dahi Kaiwan Mehta	42	Vistara	<b>Contemporary museum for architecture in India</b>  Expanding histories
Pankaj Vir Gupta Christine Mueller Kaiwan Mehta	52	vir.mueller architects	<b>Projects</b> Virtues of form
Kaiwan Mehta	62	UCJ Architecture & Environment	The monumental form and everyday scale
Ruggero Tropeano	76	Ludwig Mies van der Rohe	Tugendhat House, Brno, Czech Republic
Nicola Di Battista	90	Alessandro Mendini Mario Belleri Paolo Pizzatto Alberto Meda Antonio Citterio Michele De Lucchi F. & H. Campagna Jasper Morrison Konstantin Grcic R. & E. Bouroullec	Youthful stories
	100		<b>Rassegna</b> Finishes
Italo Lupi	108		<b>Feedback</b> Italo Lupi's Milan

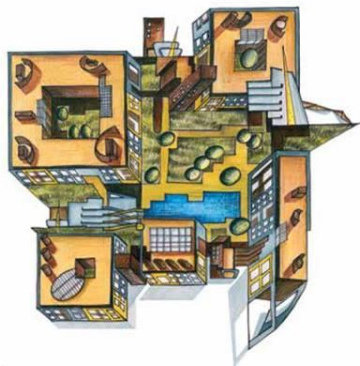


A representation of the various Indian cities and places covered is *Dorog India* the last four years.

## UCJ Architecture & Environment THE MONUMENTAL FORM AND EVERYDAY SCALE

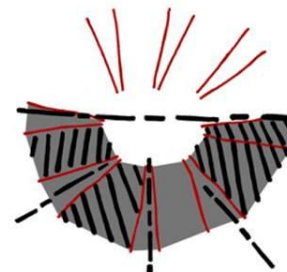
Re-imagining state buildings as a neighbourhood of spaces for public activity, the capitol complex for Naya Raipur, Chhattisgarh appears like a campus of interactive zones and sculpted volumes rather than an over-dominating state building. A nucleus for the new city integrating a public zone within the government complex, not just symbolically in thought and plan, but as a generator of urban life

Text Kaiwan Mehta  
Photos UCJ Architecture & Environment

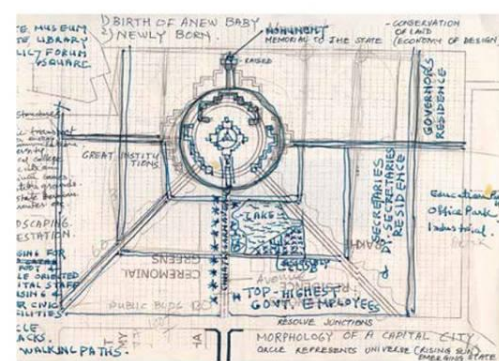


The design of a capitol complex, I am sure, is ground for great anxiety, aspiration, and imagination on the subjects of politics and public – for the planners and architects, as much as for the governmental authorities and the government cabinet itself. We imagine the leap to monumentality – and think of it as natural that state buildings, or those that represent a nation through its elected representatives should be monumental, if not also classical. There is a premium we associate with certain architectural features and aspects here. On the more intellectual slant one would imagine the state capitol complex to brave forth new ideas and ideologies – the breaking away from a past, maybe dismantling traditional hierarchies, showing the way forward to newer ways of living and thinking, and cultural transformations. Even in the latter case one is unable to escape monumentality of architecture. Very rarely would one come across a state building that does not take advantage of size, scale, as well as vista; where would one find a state building mixed up with everyday architecture of the city and the street?

This page top: an overview of the capitol complex site, October 2012. Left: an abstraction of the key design elements for the secretariat blocks. Opposite page from top: the evolution of the design concept – the sun as geometry; overview of the secretariat during its construction, October 2012; conceptual sketch of the design



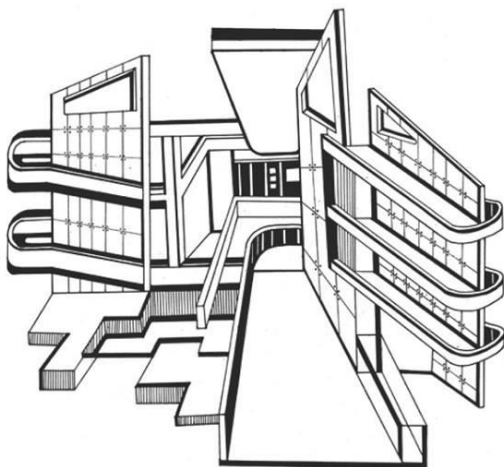
As new states form, new capital cities are emerging; this is a new India – finding newer pockets and newer stakeholders and role-players. It is not the India of Nehru or Corbusier; and it is sad that some of those pasts are soon being relegated to zones of amnesia – wilful forgetting. In this new India often monumentality comes in the absence of a bold vision or vibrant and positive politics. Monumentality is not about scale – we may reduce it to that – but, one could read vision in monumentality. When monumentality is a promise to a strong and bold future, enriching a past on its way – then that monumentality is epic-rich, a cultural vantage to understand as well as represent people and public. The generation of architects we witness in this country between independence and up until the 1980s insistently work with visions for a future and believed in the professional influence of architecture in the shaping of a national landscape. Uttam C Jain clearly is an architect of this generation; and as the principal designer of the State Capitol for Naya Raipur in Chhattisgarh he brings with him architectural







SECTION - SECRETARIAT



idioms and languages that worked with a different spirit of investment in space and time, than today. That investment always thought of time beyond oneself, space was shared-public – these two conceptual approaches are absolutely important to understand the role architecture potentially could play at one point in time. Having said this, this is a project that also runs in the office with a second generation – his son Chirag Jain entering the practice; and no studio can escape the times it lives in. As much as the design, to begin with, calls up the classical formations of the circle and the square, the universal sense of geometry and scales – the design develops in many ways with other imaginations and preoccupations. The capitol complex is in a new city – Naya Raipur – and the designers worked on the capitol complex

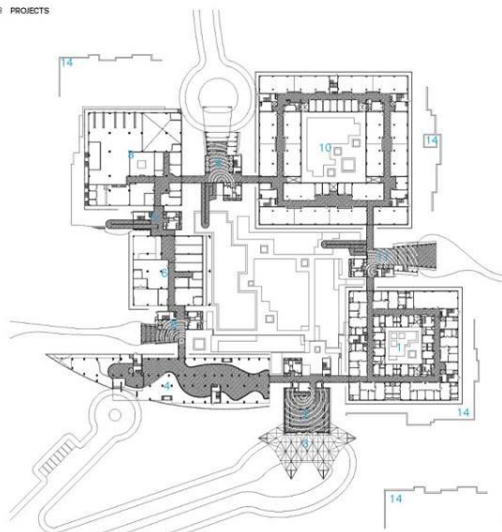
imagining it to be a nucleus for the new city – not just a symbolic nucleus in thought and plan, but literally the generator of urban life. A landscape planning approach is adopted where the site is seen in the context of its potential urban development but also in the context of its rich natural terrain. The circle encompassing the entire complex indeed sits sharp as a man-made intervention of ground, evolving a system of road circulation, division of zone for the different functions to be housed in the complex such as the secretariat, blocks for ministers, departments for state bureaucrats, judiciary, etc. One of the primary design interventions was to develop a road section – one that is conducive to pedestrian movement (discouraging vehicular traffic within the complex), and such that possibly the idea could be carried into the

This spread: various functions are housed in a series of built volumes interconnected with courtyards and terraces, marked by landscaped elements, ramp-stacks, and pergolas. The complex appears like a campus of interactive zones and sculpted volumes rather than an over-dominating state building. Opposite page far below: abstraction of the building's different space-types and elements

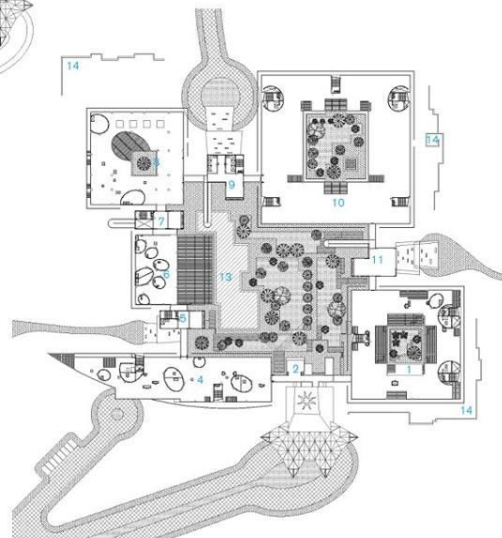








SECRETARIAT - GROUND FLOOR PLAN



SECRETARIAT - TERRACE PLAN

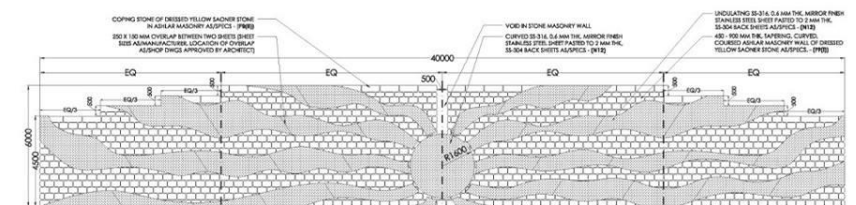


CCR ST ENTRY ELEVATION 2

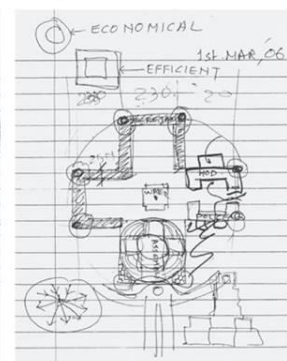
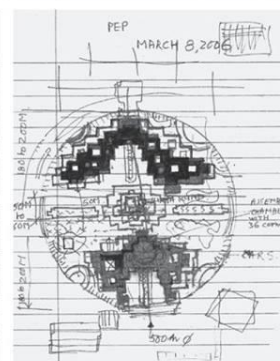
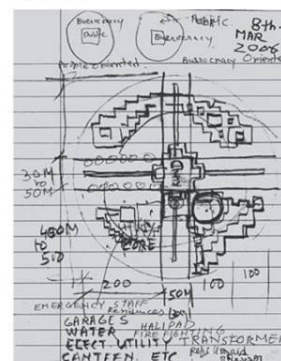
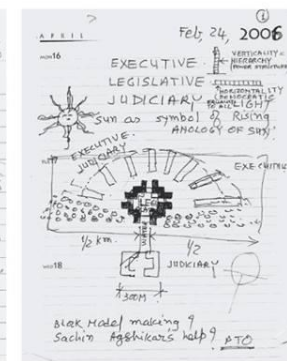
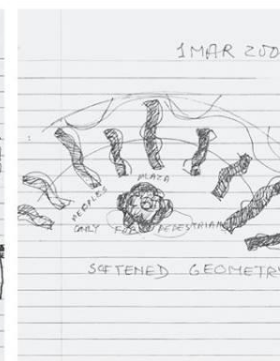


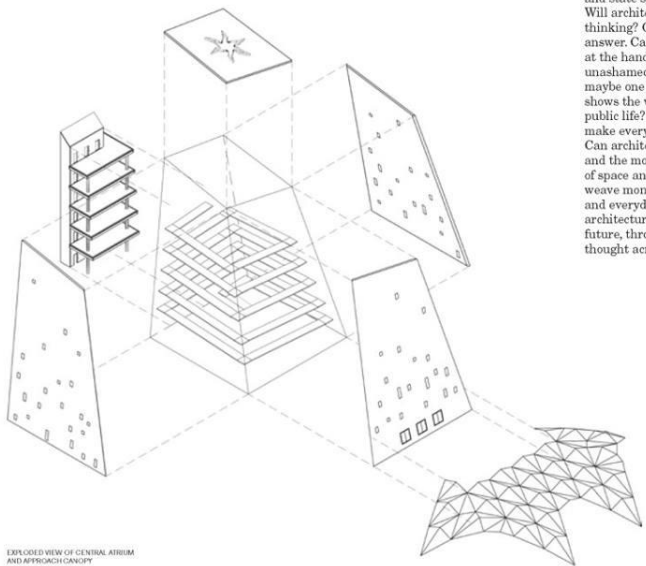
SECRETARIAT - SECTION

- 1 Secretariat Block
- 2 Lobby L3
- 3 Lobby L3 Canopy
- 4 Ministers' Block
- 5 Lobby L4
- 6 Ancillary B Block
- 7 Lobby L5
- 8 Ancillary A Block
- 9 Lobby L1
- 10 Sections Block
- 11 Lobby L2
- 12 Central Courtyard
- 13 Waterbody
- 14 Landscape walls



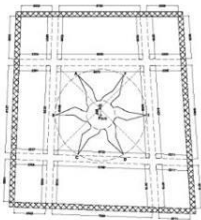
DETAIL OF THE SUN MURAL AT ENTRANCE



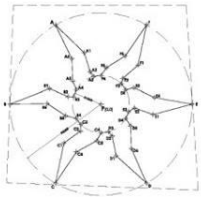


EXPLODED VIEW OF CENTRAL ATRIUM AND APPROACH CANOPY

and state symbolism can be well discussed. Will architecture determine changes in thinking? One will never be able to conclusively answer. Can one not let architecture play-out at the hands of rich and powerful – given to unashamed use of self for aggrandisement? Yes, maybe one can... and this building somewhere shows the way. Can architecture ask for a more public life? Yes, maybe it also can... indeed make everyday life smoother, but also special. Can architecture scale the special-moment and the monumental to an everyday sense of space and time? Yes, architecture can sure weave monumental time into everyday space, and everyday time into monumental space... architecture can envision a bold and better future, through subtle gestures and clarity of thought across a built landscape. ■



STRUCTURAL PLAN - DAYLIGHT



DAY CUT FOR DAYLIGHT

STRUCTURAL PLAN - DAYLIGHT

CONCEPT SKETCH



This spread (top): the central atrium is designed to stand tall, bringing sharp sunlight through a solar cut-out marks a punctuation in the building, especially with the sculptural entrance canopy that hugs its base. Below: skylights bring in abundant natural light within the central atrium







**Project**  
Capitol Complex (Capitol Master Plan, secretariat, Heads of Department & Lake Front Development)

**Location**  
Naya Raipur, Chhattisgarh

**Client**  
Naya Raipur Development Authority, Naya Raipur, Chhattisgarh

**Project Advisors (to the Client)**  
City & Industrial Development Corporation, Navi Mumbai, Maharashtra

**Design**  
UCJ architecture & environment, Mumbai, Maharashtra

**Principal Architects**  
Uttam C. Jain, Chirag Jain & Shona Jain

**Design Team**  
Deepali Rodrigues, Yashaswini Apte, Manmeet Padam, Gauri Kelkar, Ninad Chavan, Sheetal Chitris, Bhavna Trehan, Loretta Rego, Savan Jain, Roopa Iyer, Vidhita Hattangadi, Shivani Naseri, Rashmi Loh

**Site Area**  
Capitol Master Plan 125 Hectares (including a 29 Hectare Lake Front Development)

**Project Area**  
Secretariat  
64,655 m<sup>2</sup>  
Heads of Department  
68,376 m<sup>2</sup>  
**Amenities & Utilities**  
15,063 m<sup>2</sup>  
Lake Front Amenities  
1,282 m<sup>2</sup>

**Civil Contractors**  
NRCL Ltd., Hyderabad, Telangana

**Structural Engineers**  
Shanghui & Associates Consultants Pvt. Ltd., Mumbai, Maharashtra

**Services**  
Electrical & Low-voltage Consultant: Trans Energy Electrical Consultants, Ahmedabad, Gujarat  
Plumbing & Fire Fighting Consultant: Dnyanesh G. Bhawe, Mumbai, Maharashtra  
HVAC Consultant: Dikshit Consultants & Engineers Pvt. Ltd., Mumbai, Maharashtra

**Other Consultants**  
**Landscape Consultant**  
Kishore D. Pradhan, Mumbai, Maharashtra

**Quantity Surveyor**  
Yashwant Pandit, Mumbai, Maharashtra

**Site Supervision**  
Naya Raipur Development Authority, Naya Raipur, Chhattisgarh & Hospitech Management Consultants Pvt. Ltd., New Delhi

**Model Maker**  
**Physical**  
Smaseer Eknath Patil, Mumbai, Maharashtra  
3-D Model: C&BOL A&P, Mumbai, Maharashtra

**Project Estimate**  
₹ 561.00 Crore approx.

**Initiation of Project**  
February 2006

**Completion Project**  
Secretariat  
(Completed 31st March 2013)  
Heads of Department  
(Under Construction)  
Lake Front Development  
(Completed 31st March 2013)  
Master Plan & Infrastructure Development  
(Under Construction)

**Conceptual sketches**  
Uttam C. Jain

**Abstract graphics**  
Nandita Rebello

**Photographs**  
Chirag Jain

**Photographs (Aerial)**  
Courtesy NRDA

**Photographs (Study models & construction stage)**  
Courtesy Architect/Contractor

This spread: the architectural elements complement each other to form an organic whole; an inclusive complex which incorporates public presence as an important part of the architectural

programme. A landscape planning approach is adopted where the site is seen in the context of its potential urban development but also in the context of its rich natural terrain

